



2013-2015 NTG4.5 - 4.7 G Class W463 Installation Guide



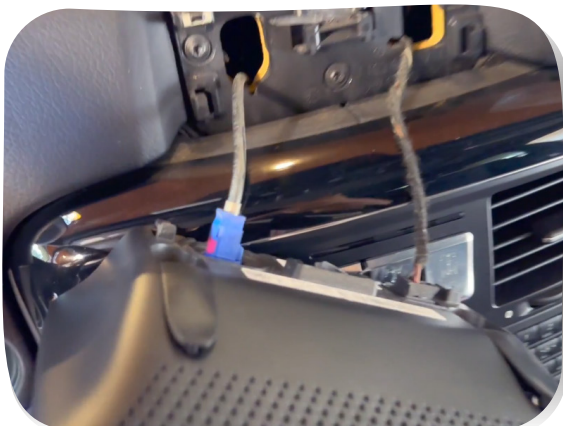
1. Pry the rubber cover on the rear of screen to expose the screws



2. Remove the 2 screws behind the screen



3. You can now remove the screen



4. Unplug this 2 cables at the back of the screen. We will be using the blue LVDS cable later on the new screen



2013-2015 NTG4.5 - 4.7 G Class W463 Installation Guide



5. Use a Plastic pry too to remove the trim piece around the radio unit



6. You can now then remove the plastic trim



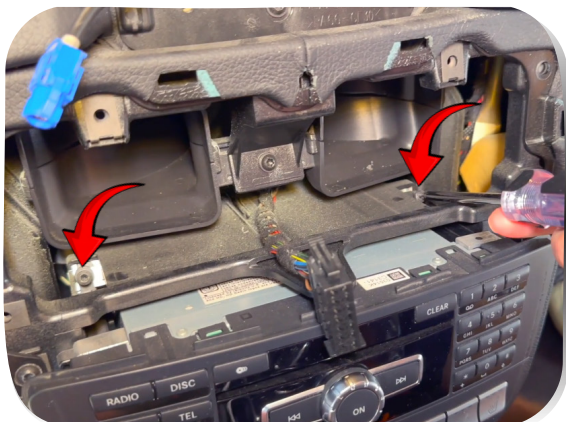
7. Remove all the bolts around the airvent



8. Remove the airvent and unplug the cable



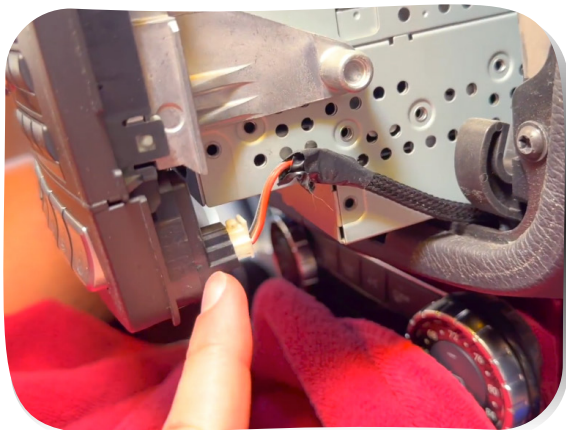
2013-2015 NTG4.5 - 4.7 G Class W463 Installation Guide



9. Remove the 2 screws under the airvent



10. You can now remove the radio unit. You could also put a towel underneath it to prevent any scratching



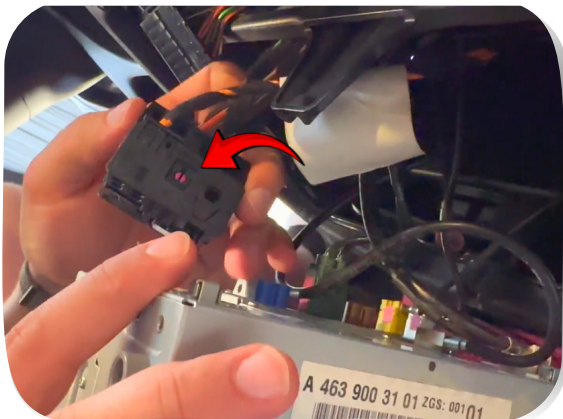
11. Remove the small connector the the bottom right of the radio



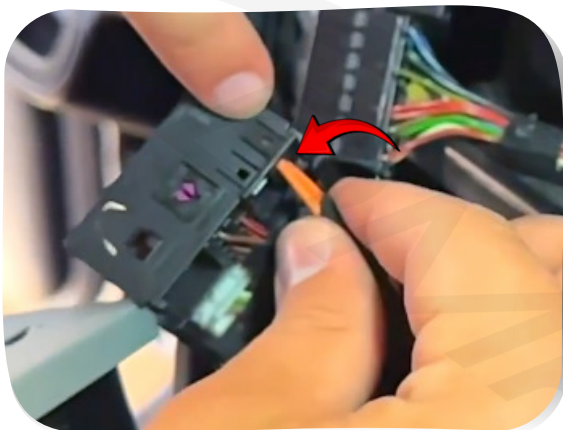
12. You can now rest the radio on the towel to gain easy access to the connections at the back of the radio



2013-2015 NTG4.5 - 4.7 G Class W463 Installation Guide



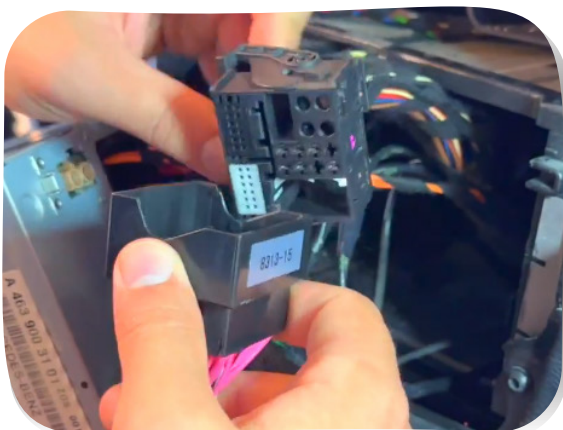
13. Remove the factory harness



14. Transfer the fiber optic cables (Orange color) to the new harness



15. Plug in the new harness with the fiber optic cables into the radio



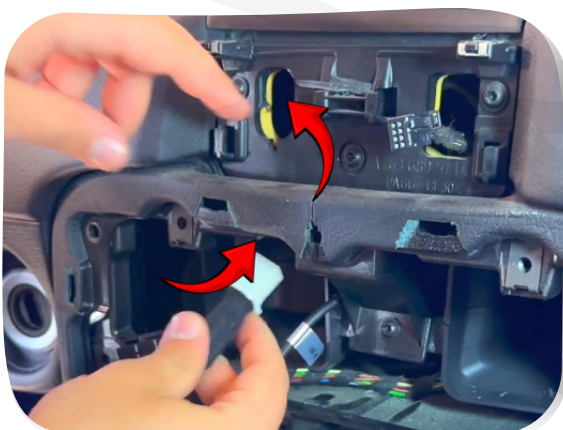
16. Plug in the original radio connector to the other end of the new harness



2013-2015 NTG4.5 - 4.7 G Class W463 Installation Guide



17. Connect the LVDS cable from the new harness



18. Route the white connector to the top hole



19. Connect the AUX cable inside the center storage box with an adaptor which is included with your kit



20. You can now plug in the white connector to the new screen

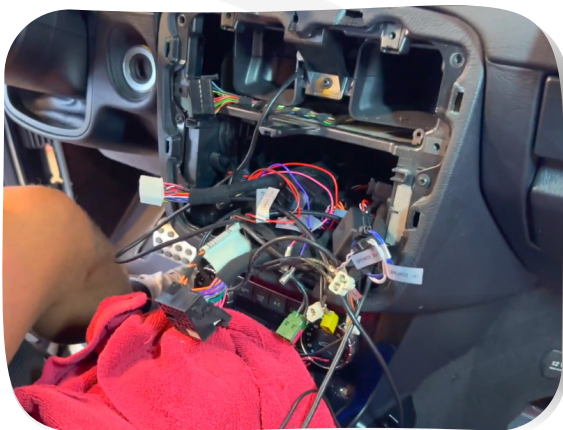


2013-2015 NTG4.5 - 4.7 G Class W463 Installation Guide



21. You can now run a test to make sure everything is working fine before putting everything back together.

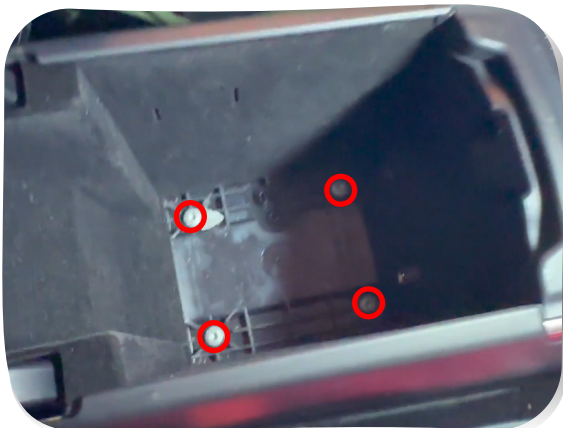
Test: Music, Car Info(Original NTG), Rear Camera



22. Unplug all the connector from the radio, and remove the radio entirely



23. This step is required to route the AUX and 2 USB ports to the center storage



24. Remove the carpet under the center storage box and remove the 4 screws



2013-2015 NTG4.5 - 4.7 G Class W463 Installation Guide



25. You can now lift up the storage box



26. Remove this connector under the storage box



27. Remove the 2 bolts holding the shifter pannel



28. You can now pop open the pannel and push to the side



2013-2015 NTG4.5 - 4.7 G Class W463 Installation Guide



29. Plug everything back in after routing the cables through the center storage and installation is complete

DMP CAR
DESIGN



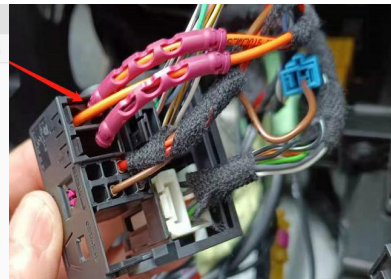
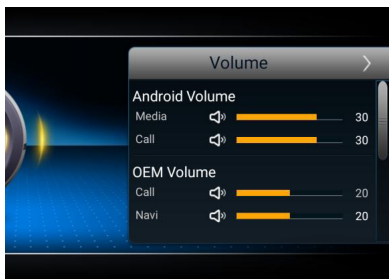
2013-2015 NTG4.5 - 4.7 G Class W463 Installation Guide



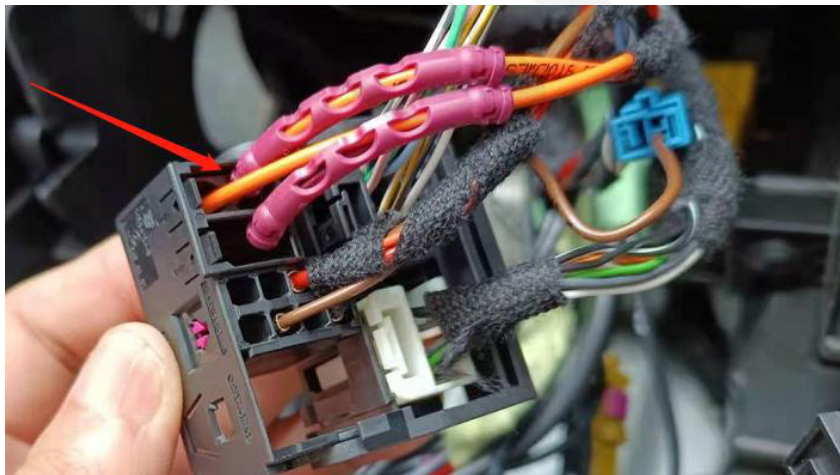
Volume settings

If no sound is heard after the above settings, please check the volume screen and whether the vehicle's fiber optic cable is connected.

- 1) Settings--Volume--Android Volume/OEM Volume
- 2) Settings--Android--Sound

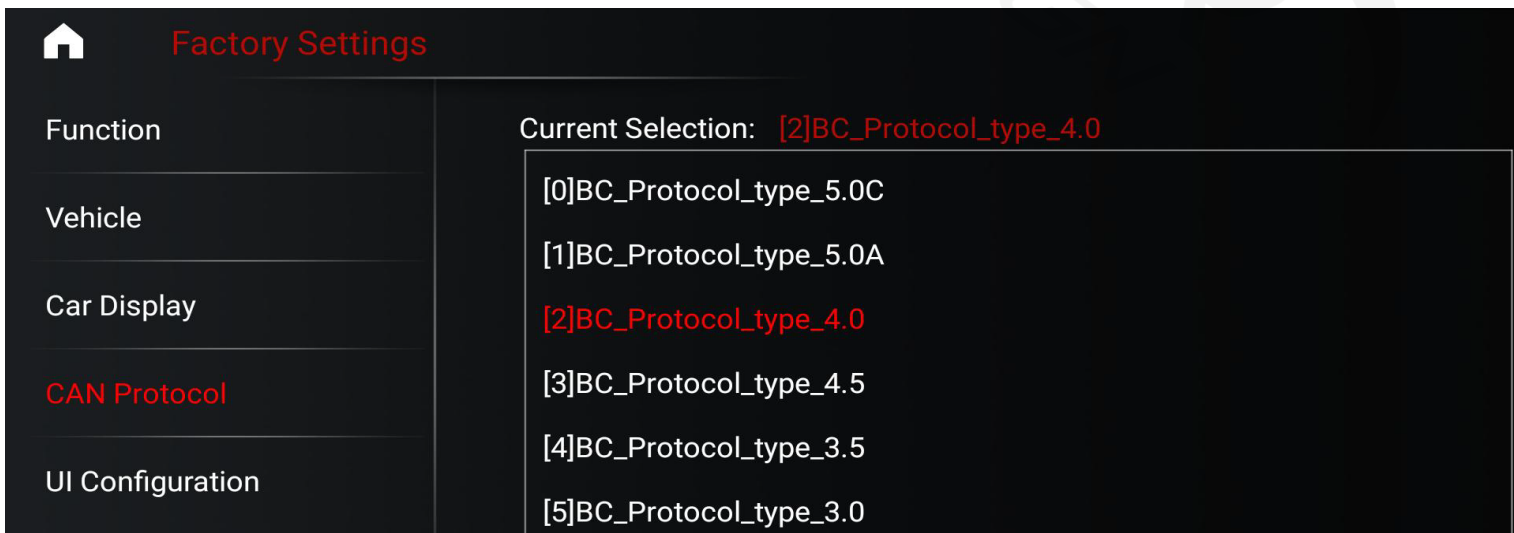


If the car plug has fiber optic plug but without speaker cable, then you need to add a small speaker.



CAN Protocol selection

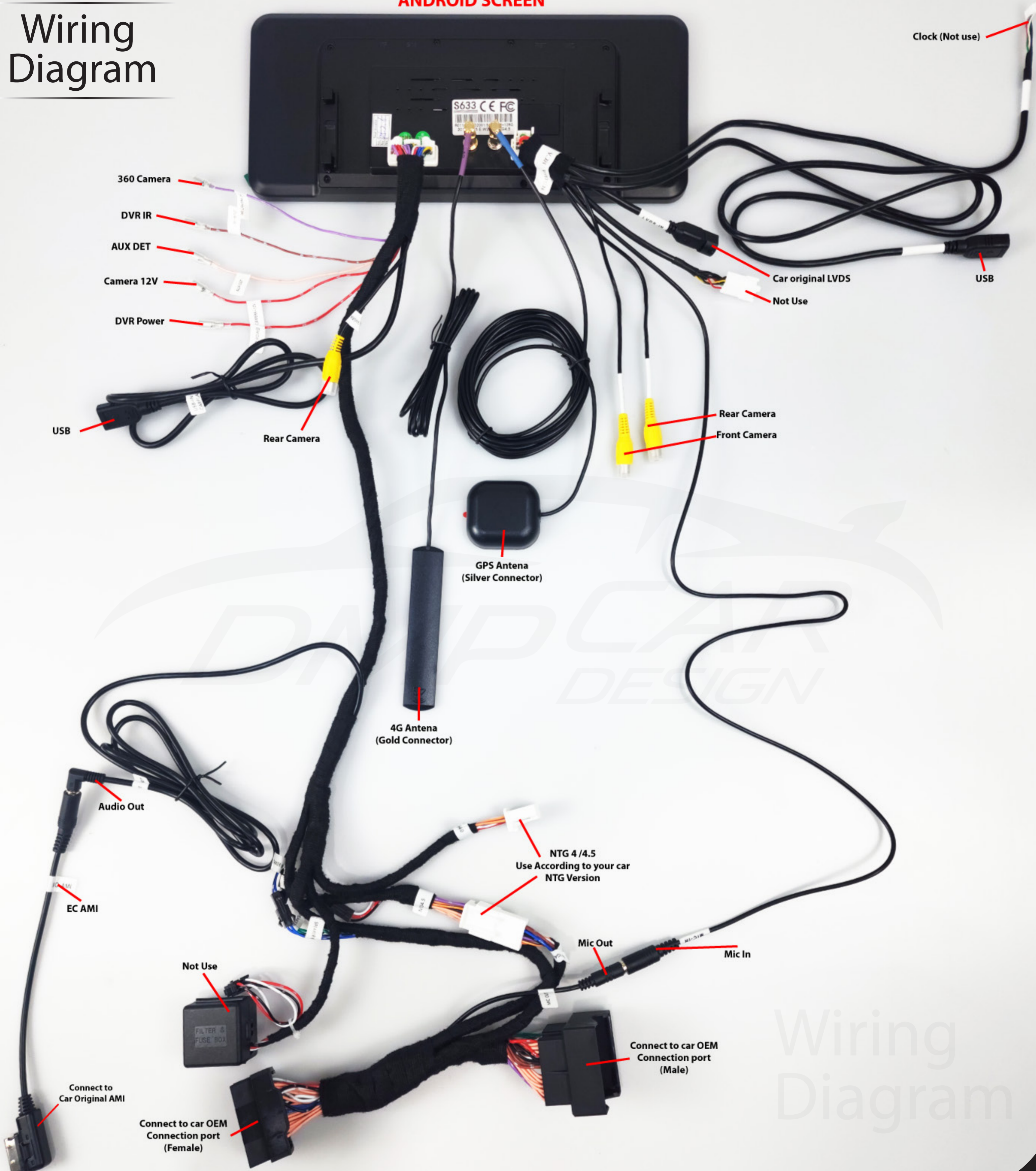
Settings — Factory (Password 190627) —> Can Protocol : choose 4.0



Note: If the wrong CAN protocol is selected, the display of the air conditioner on the Android screen will not work.

Wiring Diagram

ANDROID SCREEN



Wiring Diagram